




28/16-18 Eastbourne Rd, Darling Point, NSW 2027

Leased - \$750 per Week

Apartment 1  2  1 



** HOLDING DEPOSIT TAKEN **

This elevated and oversized One Bedroom apartment enjoys a bright easterly aspect with full panoramic views over Double Bay. Featuring an enormous combined living and dining area, spacious balcony, ample built-in storage and custom joinery throughout, full-sized kitchen with dishwasher, master bedroom with ensuite, and a separate alcove off the living room for potential use as a guest bedroom.

Open for Inspection

By Appointment.

This unique apartment is located in well-maintained, fully secure building with communal laundry facilities on each floor, as well as an secure car space and storage room.

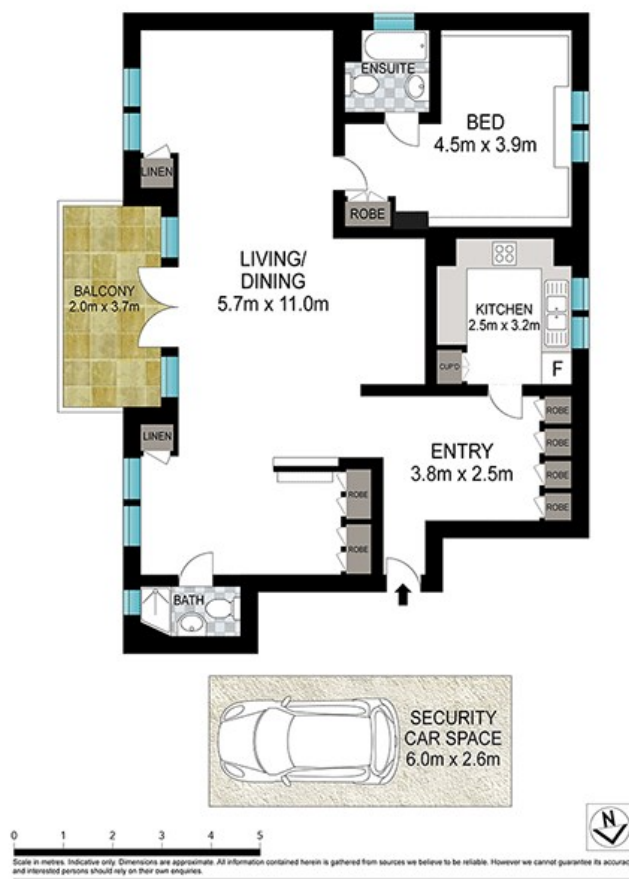
- Unique, oversized floorplan
- Amazing views
- Sunny, elevated position
- Custom joinery
- Built-in storage
- Excellent location
- Secure car space
- Store room

Listed By

Kosta Gravanis
Phone: (02) 9358 4255
Mobile: 0404 737 294



Floorplan



28/16-18 Eastbourne Road, Darling Point